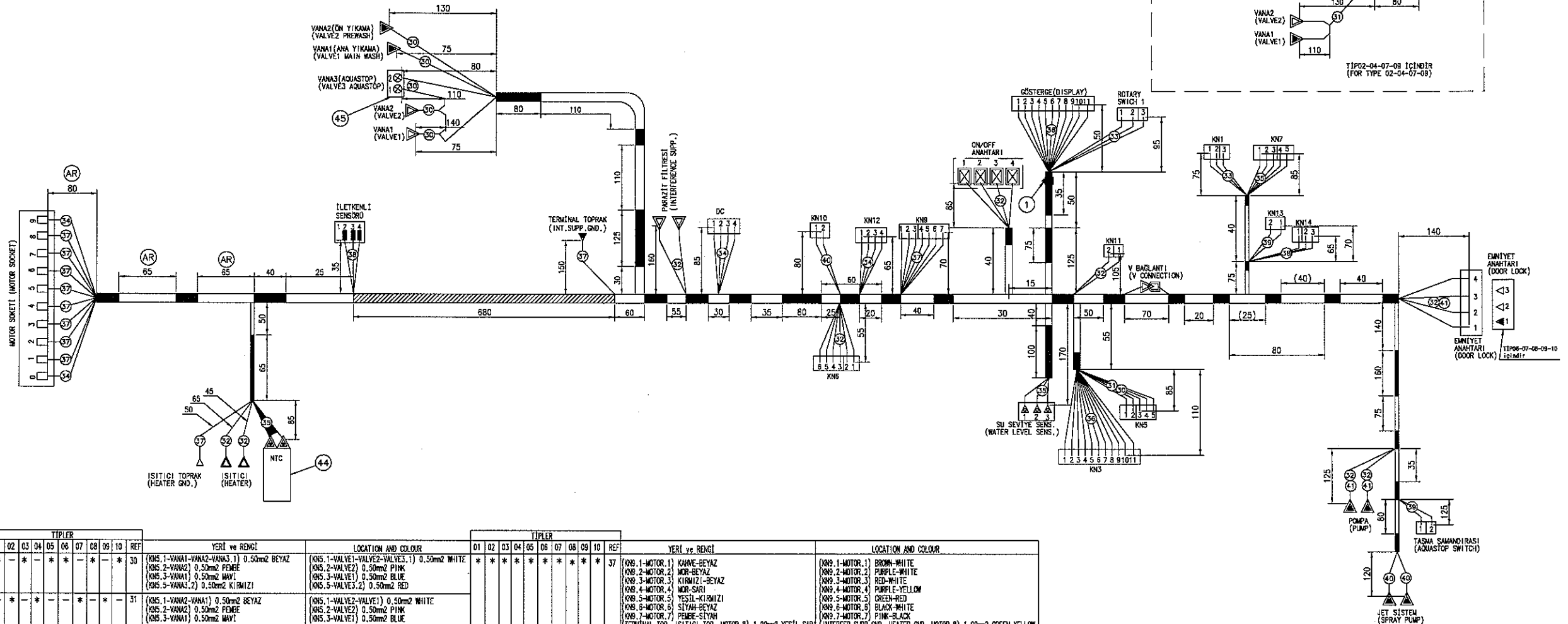


■ Tam bantajlama (FULL BANDAGE)
 ▨ 5-6 mm araıklı bantajlama (5-6MM INTERMEDIATE BANDAGE)



TIPLER										
01	02	03	04	05	06	07	08	09	10	REF
*	*	*	*	*	*	*	*	*	*	30
YERİ ve RENGİ		LOCATION AND COLOUR								
(KNS.1-VANA1-VANA2-VANA3.1) 0.50mm2 BEYAZ (KNS.2-VANA2) 0.50mm2 PİNK (KNS.3-VANA1) 0.50mm2 MAVİ (KNS.5-VANA2.2) 0.50mm2 KIRMIZI		(KNS.1-VALVE1-VALVE2-VALVE3.1) 0.50mm2 WHITE (KNS.2-VALVE2) 0.50mm2 PINK (KNS.3-VALVE1) 0.50mm2 BLUE (KNS.5-VALVE2.2) 0.50mm2 RED								
*	*	*	*	*	*	*	*	*	*	31
(KNS.1-VANA2-VANA1) 0.50mm2 BEYAZ (KNS.2-VANA2) 0.50mm2 PİNK (KNS.3-VANA1) 0.50mm2 MAVİ		(KNS.1-VALVE2-VALVE1) 0.50mm2 WHITE (KNS.2-VALVE2) 0.50mm2 PINK (KNS.3-VALVE1) 0.50mm2 BLUE								
*	*	*	*	*	*	*	*	*	*	32
(KNS.6-EMN.AN.2) MOR-SARI (KNS.5-ISITICI.1) 0.50mm2 KIRMIZI (ISITICI.1-EMN.AN.4) 1.50mm2 KIRMIZI (EMN.AN.1-V.BAĞLANTI) YEŞİL-KIRMIZI (KNS.4-POMPA) MAVİ-BEYAZ (KNS.3-POMPA) MAVİ-BEYAZ (KNS.2-ON/OFF.3) YEŞİL-MAVİ (ON/OFF.3-EMN.AN.3) 1.5mm2 TURUNCU (KNS.1-V.BAĞLANTI-ON/OFF.4) KIRMIZI-BEYAZ (ON/OFF.4-ON/1.1) 1.5mm2 KIRMIZI (KNT.2-ISITICI.2) 1.5mm2 GRİ (PAR.FILT.-ON/OFF.1) 1.50mm2 GRİ (PAR.FILT.-ON/OFF.2) 1.50mm2 GRİ		(KNS.6-DOOR LOCK.2) PURPLE-YELLOW (KNS.5-HEATER.1) 0.50mm2 RED (HEATER.1-DOOR LOCK.4) 1.50mm2 RED (DOOR LOCK.1-V CONNECTION) GREEN-RED (KNS.4-PUMP) BLUE-WHITE (KNS.3-PUMP) BLUE-WHITE (KNS.2-ON/OFF.3) GREEN-BLUE (ON/OFF.3-DOOR LOCK.3) 1.5mm2 ORANGE (KNS.1-V CONNECTION-ON/OFF.4) RED-WHITE (ON/OFF.4-ON/1.1) 1.5mm2 RED (KNT.2-HEATER.2) 1.5mm2 GRAY (INT.SUPP.-ON/OFF.1) 1.50mm2 GRAY (INT.SUPP.-ON/OFF.2) 1.50mm2 GRAY								
*	*	*	*	*	*	*	*	*	*	33
(KNT.1-ROTARY.3) 0.35mm2 BEYAZ (KNT.2-ROTARY.2) 0.35mm2 GRİ (KNT.3-ROTARY.1) 0.35mm2 MAVİ		(KNT.1-ROTARY.3) 0.35mm2 WHITE (KNT.2-ROTARY.2) 0.35mm2 GRAY (KNT.3-ROTARY.1) 0.35mm2 BLUE								
*	*	*	*	*	*	*	*	*	*	34
(KNT.2-DC.1) KIRMIZI-BEYAZ (KNT.2-DC.2) YEŞİL-KIRMIZI (KNT.3-DC.3) BEYAZ-TURUNCU (KNT.4-MOTOR.0) MAVİ-BEYAZ (MOTOR.9-DC.4) GRİ-BEYAZ		(KNT.2-DC.1) RED-WHITE (KNT.2-DC.2) GREEN-RED (KNT.3-DC.3) WHITE-ORANGE (KNT.4-MOTOR.0) MAVİ-BEYAZ (MOTOR.9-DC.4) GRAY-WHITE								
*	*	*	*	*	*	*	*	*	*	35
(KNT.1-NTC) 0.35mm2 YEŞİL (KNT.2-NTC) 0.35mm2 YEŞİL (KNT.3-SS2) 0.35mm2 PİNK (KNT.4-SS1) 0.35mm2 TURUNCU (KNT.5-SS3) 0.35mm2 BEYAZ		(KNT.1-NTC) 0.35mm2 GREEN (KNT.2-NTC) 0.35mm2 GREEN (KNT.3-WATER LEVEL SENS.2) 0.35mm2 PINK (KNT.4-WATER LEVEL SENS.1) 0.35mm2 ORANGE (KNT.5-WATER LEVEL SENS.3) 0.35mm2 WHITE								
*	*	*	*	*	*	*	*	*	*	36
(KNS.1-GÖSTERGE.1) 0.35mm2 TURUNCU (KNS.2-GÖSTERGE.2) 0.35mm2 PİNK (KNS.3-GÖSTERGE.3) 0.35mm2 BEYAZ (KNS.4-GÖSTERGE.4) 0.35mm2 GRİ (KNS.5-GÖSTERGE.5) 0.35mm2 MAVİ (KNS.6-GÖSTERGE.6) 0.35mm2 YEŞİL (KNS.7-GÖSTERGE.7) 0.35mm2 KIRMIZI (KNS.8-GÖSTERGE.8) 0.35mm2 KAHVERENGİ (KNS.9-GÖSTERGE.9) 0.35mm2 SARİ (KNS.10-GÖSTERGE.10) 0.35mm2 SIYAH (KNS.11-GÖSTERGE.11) 0.35mm2 MAVİ		(KNS.1-DISPLAY.1) 0.35mm2 ORANGE (KNS.2-DISPLAY.2) 0.35mm2 PINK (KNS.3-DISPLAY.3) 0.35mm2 WHITE (KNS.4-DISPLAY.4) 0.35mm2 GRAY (KNS.5-DISPLAY.5) 0.35mm2 BLUE (KNS.6-DISPLAY.6) 0.35mm2 GREEN (KNS.7-DISPLAY.7) 0.35mm2 RED (KNS.8-DISPLAY.8) 0.35mm2 BROWN (KNS.9-DISPLAY.9) 0.35mm2 YELLOW (KNS.10-DISPLAY.10) 0.35mm2 BLACK (KNS.11-DISPLAY.11) 0.35mm2 PURPLE								

TIPLER										
01	02	03	04	05	06	07	08	09	10	REF
*	*	*	*	*	*	*	*	*	*	37
YERİ ve RENGİ		LOCATION AND COLOUR								
(KNS.1-MOTOR.1) KAHVE-BEYAZ (KNS.2-MOTOR.2) MOR-BEYAZ (KNS.3-MOTOR.3) KIRMIZI-BEYAZ (KNS.4-MOTOR.4) MOR-SARI (KNS.5-MOTOR.5) YEŞİL-KIRMIZI (KNS.6-MOTOR.6) SIYAH-BEYAZ (KNS.7-MOTOR.7) PİNK-SIYAH (TERMINAL TOP.-ISITICI TOP.-MOTOR.8) 1.00mm2 YEŞİL-SARI		(KNS.1-MOTOR.1) BROWN-WHITE (KNS.2-MOTOR.2) PURPLE-WHITE (KNS.3-MOTOR.3) RED-WHITE (KNS.4-MOTOR.4) PURPLE-YELLOW (KNS.5-MOTOR.5) GREEN-RED (KNS.6-MOTOR.6) BLACK-WHITE (KNS.7-MOTOR.7) PINK-BLACK (INTERFER.SUPP.-ON/OFF-HEATER GND.-MOTOR.8) 1.00mm2 GREEN-YELLOW								
*	*	*	*	*	*	*	*	*	*	38
(KNT.4-İLETKENLİK SENSÖRÜ.3) 0.35mm2 SARİ (KNT.4-İLETKENLİK SENSÖRÜ.2) 0.35mm2 MAVİ (KNT.3-İLETKENLİK SENSÖRÜ.4) 0.35mm2 BEYAZ		(KNT.4-İLETKENLİK SENSÖRÜ.3) 0.35mm2 YELLOW (KNT.4-İLETKENLİK SENSÖRÜ.2) 0.35mm2 BLUE (KNT.3-İLETKENLİK SENSÖRÜ.4) 0.35mm2 WHITE								
*	*	*	*	*	*	*	*	*	*	39
(KNT.1.1-TAŞMA ŞAMANDIRASI.1) 0.50mm2 KAHVE (KNT.2-TAŞMA ŞAMANDIRASI.2) 0.50mm2 MOR		(KNT.1.1-AQUASTOP SWITCH.1) 0.50mm2 BROWN (KNT.2-AQUASTOP SWITCH.2) 0.50mm2 PURPLE								
*	*	*	*	*	*	*	*	*	*	40
(KNT.0.1-JET SİSTEM.1) 0.50mm2 PİNK (KNT.0.2-JET SİSTEM.2) 0.50mm2 MOR		(KNT.0.1-SPRAY PUMP.1) 0.50mm2 PINK (KNT.0.2-SPRAY PUMP.2) 0.50mm2 PURPLE								
*	*	*	*	*	*	*	*	*	*	41
(KNS.6-EMN.AN.2) MOR-SARI (KNS.5-EMN.AN.1) 0.50mm2 KIRMIZI (EMN.AN.2-ISITICI.1) 1.50mm2 KIRMIZI (KNS.4-POMPA) MAVİ-BEYAZ (KNS.3-ON/OFF.3) YEŞİL-MAVİ (ON/OFF.3-EMN.AN.3) 1.5mm2 TURUNCU (KNS.1-ON/OFF.4) KIRMIZI-BEYAZ (ON/OFF.4-ON/1.1) 1.5mm2 KIRMIZI (KNT.2-ISITICI.2) 1.5mm2 GRİ (PAR.FILT.-ON/OFF.1) 1.50mm2 GRİ (PAR.FILT.-ON/OFF.2) 1.50mm2 GRİ		(KNS.6-DOOR LOCK.1) PURPLE-YELLOW (KNS.5-EMN.AN.2) 0.50mm2 RED (DOOR LOCK.2-HEATER) 1.50mm2 RED (KNS.3-PUMP) BLUE-WHITE (KNS.2-ON/OFF.3) GREEN-BLUE (ON/OFF.3-DOOR LOCK.3) 1.5mm2 ORANGE (KNS.1-ON/OFF.4) RED-WHITE (ON/OFF.4-ON/1.1) 1.5mm2 RED (KNT.2-HEATER.2) 1.5mm2 GRAY (INTERFERENCE SUPP.-ON/OFF.1) 1.50mm2 GRAY (INTERFERENCE SUPP.-ON/OFF.2) 1.50mm2 GRAY								

-Parça / komponenti oluşturan ham madde, boy, kaplama, vs. RoHS ile ilgili AB Yönetmeliği (2002/95/EC) ve Arçelik Çevre Prosedürüne (90-QP-001) uygun olmalıdır.
 -The raw material, including all the additives, paint, coatings, etc., of the part / component must conform to the EU directive 2002/95/EC on RoHS and Arçelik Procedure 90-QP-001

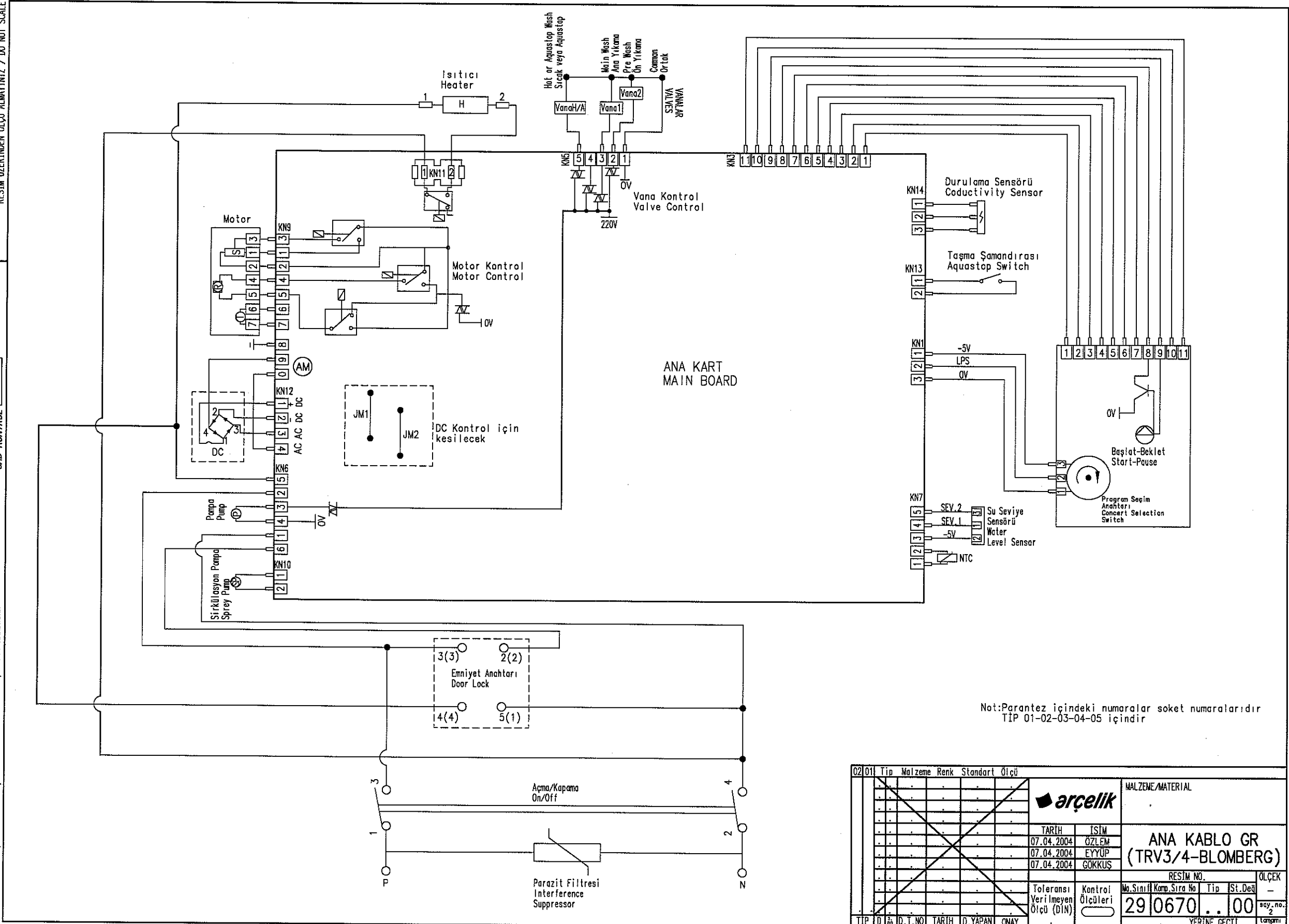
- NOT :
- 1) Kablo kesitleri aksi belirtilmedikçe 0.75 mm²'dir.
 - 2) Kabloların boy ölçülerine uylarından 8 mm sıyrılmış kısımlar doğrudur.
 - 3) PVC kablo dış kılıflarının malzemesi UL94 Standart (0/1.6mm) uygun olmalıdır.
 - 4) PVC kablolar TS 9750 ve TS 9758'e uygun olmalıdır.
 - 5) Verilen bantaj boyutları 15mm'dir.
- NOTE:
- 1) Cable section are 0.75mm² unless specified otherwise
 - 2) Cable length measurements include 8mm stripped section
 - 3) Outer cover material of PVC cable must be compatible with UL94-0 (1.6mm) standard.
 - 4) PVC Cables must be compatible with TS-6570 and TS-9758 standards
 - 5) Ungiven bandage measurements are 15mm

SÜSÜK SU/COLD WATER										
JET SİSTEM/SPRAY PUMP										
İLETKENLİK SENSÖRÜ/CONDUCTIVITY SENSOR										
AQUASTOP TAŞMA ŞAMANDIRASI/AQUASTOP VANASI										
Tip Matrye Renk Standart Ölçü										
01	02	03	04	05	06	07	08	09	10	REF
MALZEME/MATERIAL										
ARÇELİK										
TARİH										İSTİM
07.04.2004										ÖZLEM
07.04.2004										SYTP
07.04.2004										ÇUKUR
07.04.2004										RESİM NO.
07.04.2004										OLÇEK
07.04.2004										Tip. St. Det.
07.04.2004										29 0670
07.04.2004										100
07.04.2004										YERİNE GEÇTİ
07.04.2004										İmza

RESİM ÜZERİNDEN ÖLÇÜ ALMAYINIZ / DO NOT SCALE

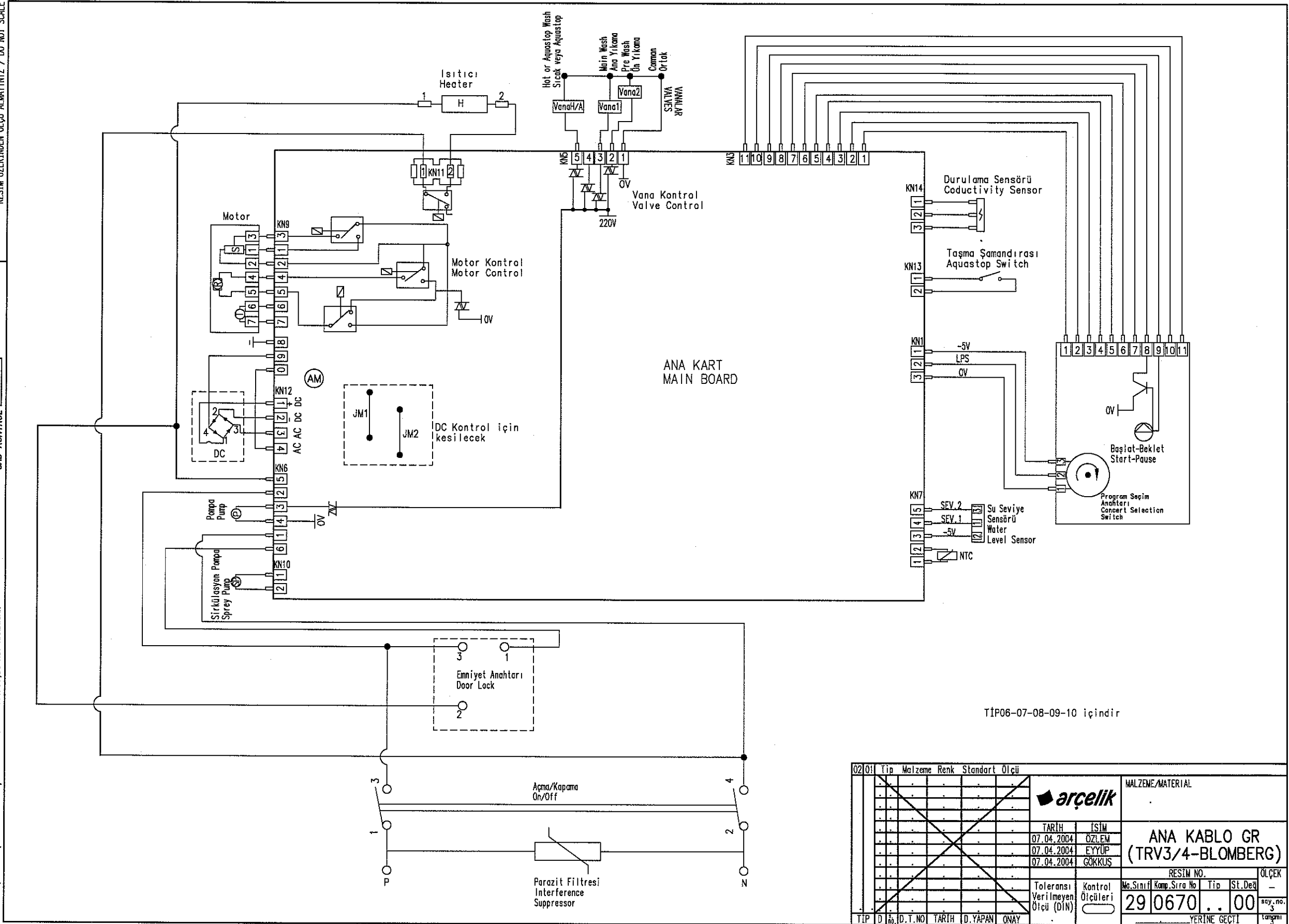
CAD KONTROL

CAD İLE ÇİZİLMİŞTİR ELDE DEĞİŞTİRMEYİNİZ / CAD OUTPUT, DO NOT HANDWORK



Not:Parantez içindeki numaralar soket numaralarıdır
TIP 01-02-03-04-05 içindir

02/01	Tip	Malzeme	Renk	Standart	Ölçü	MALZEME/MATERIAL	
						arçelik	
						TARİH	İSİM
						07.04.2004	ÖZLEM
						07.04.2004	EYYÜP
						07.04.2004	GOKKUS
						Toleransı Verilmeyen Ölçü (DIN)	Kontrol Ölçüleri
						RESİM NO.	ÖLÇEK
						29/0670	..00
						Mo.Sınıfı	Komp.Sıra No
						Tip	St.Ded
							say.no.
						YERİNE GEÇTİ	İmza



TIP06-07-08-09-10 içindir

02	01	Tip	Malzeme	Renk	Standart	Ölçü	MALZEME/MATERIAL							
							ANA KABLO GR (TRV3/4-BLOMBERG)							
							TARİH		İSİM		RESİM NO.		ÖLÇEK	
							07.04.2004		ÖZLEM		Ma.Sınıf		-	
							07.04.2004		EYYÜP		Kamp.Sıra No		Tip	
07.04.2004		GÖKKÜS		Toleransı Verilmeyen Ölçü (DIN)		Kontrol Ölçüleri		St.Değ						
TIP D No D.T.NO TARİH D.YAPAN ONAY							29 0670 .. 00		soy.no. 3					
							YERİNE GEÇTİ		Tarih					